

TB32S-IN BRAKE

Induction Motor Electronic Brake controller

User's Manual



With Brake Function



Three Phase Power Using Occasion

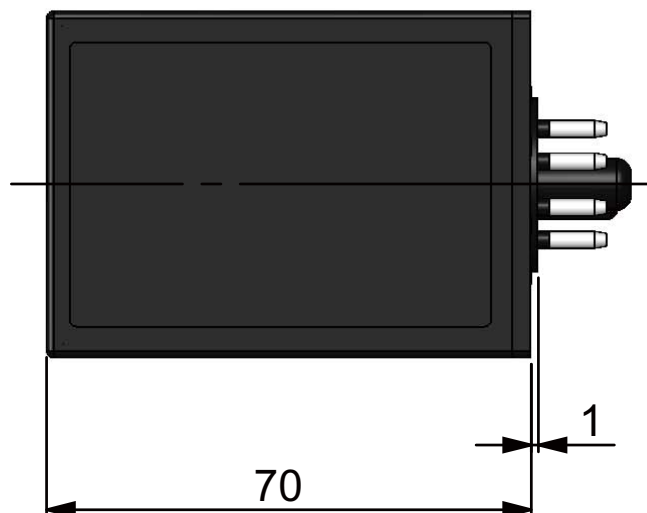
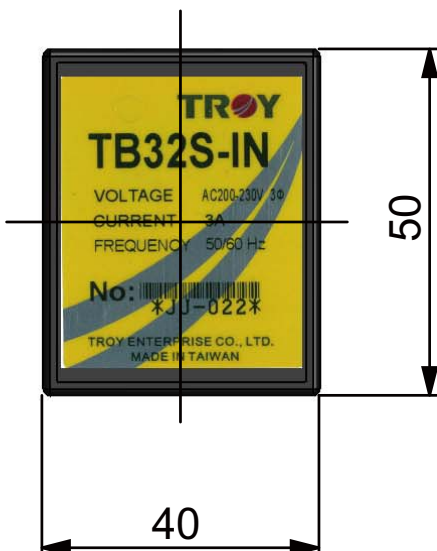
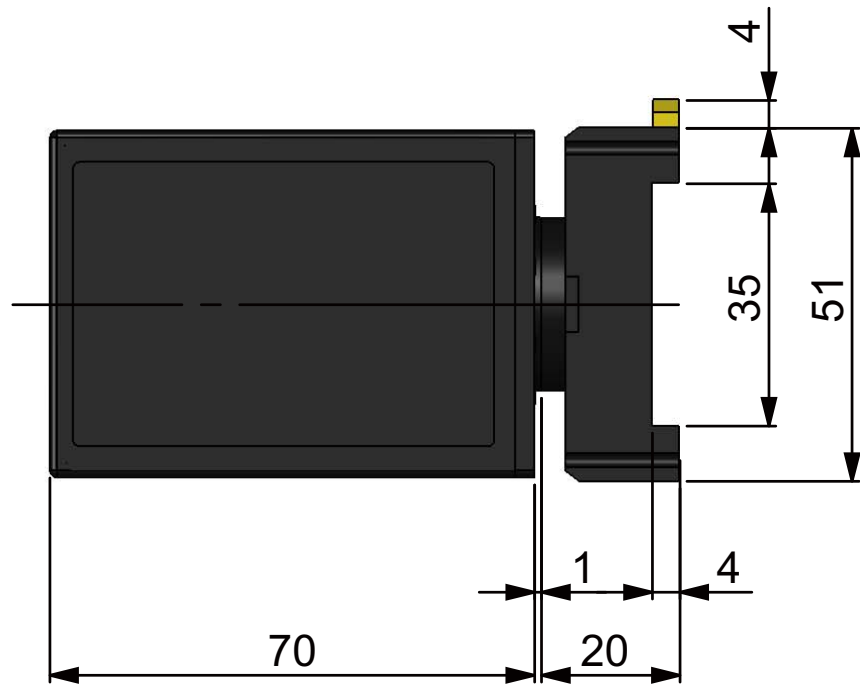
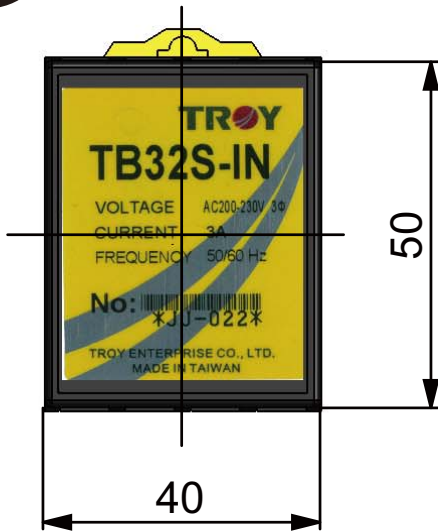
※Use smart phone to scan it to read online



1 • Specs

Controller model	TB32S-IN
Power input (V)	Three Phase AC200-230
Driver current (A)	MIN ≤ 3
Brake current time	About 0.5 seconds
Drive Power (W)	MIN ≤ 90(Use Brake Resistance in 60W,90W)
Function	•Instantaneous STOP
Ambient temperature	0 ~ +40°C
Ambient humidity	MIN ≤ 85%
Dimension (mm)	50(L)X 40(W) X70(H)
Weight(g)	88

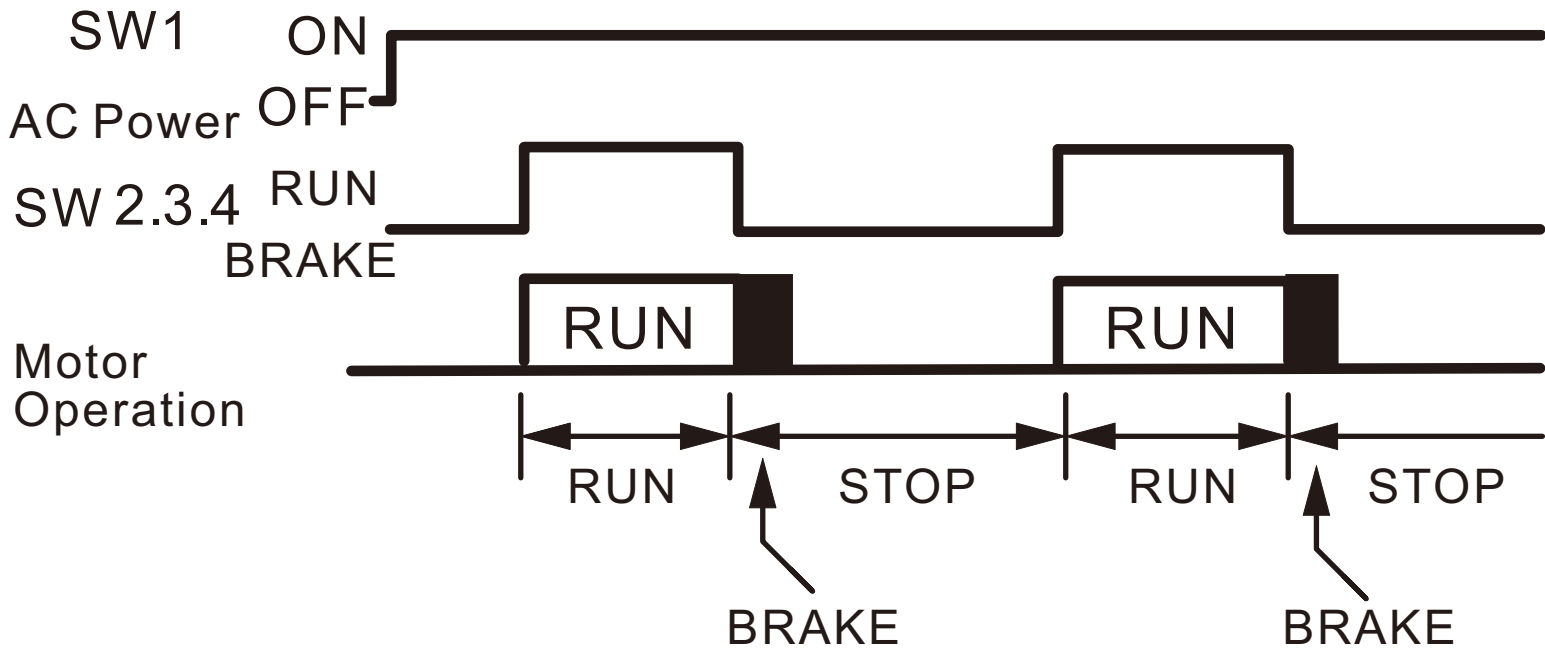
2 • Dimension



3 • Timing Chart

➤ RUN/BRAKE STOP

- SW2, SW3, SW4 As soon as switching to "RUN", the Motor will run immediately
- SW2, SW3, SW4 As soon as switching to "BRAKE", the Motor will stop immediately. After Brake for about 0.5 seconds, the brake current will flow through it. At this time the Motor will have no holding torque.



Notice

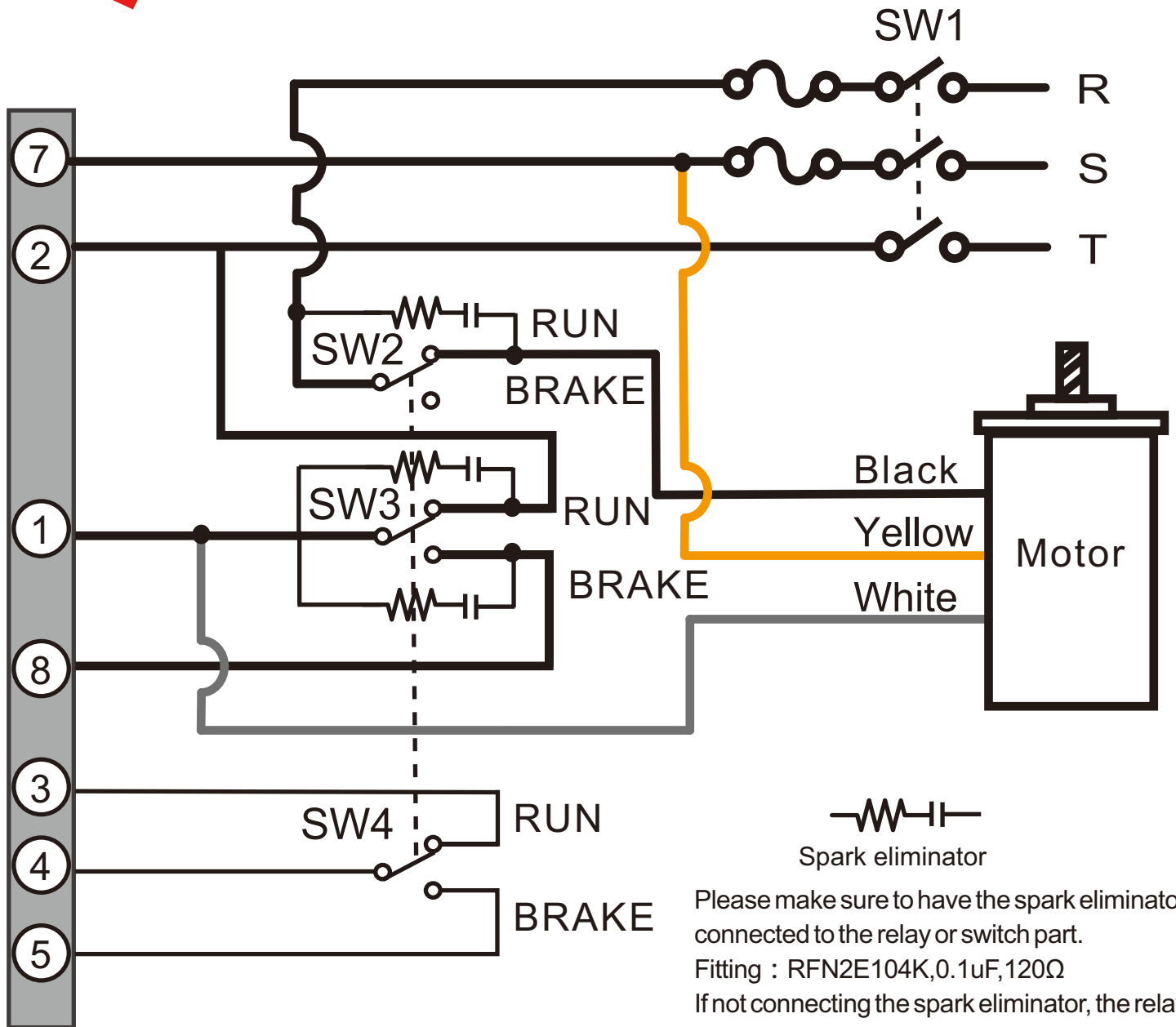
✘ Important

- If you use BRAKE/STOP function, please keep the using frequency at **above 4 seconds**. (run for 2 seconds and stop for 2 seconds) If the using frequency is too high, temperature of the Motor will become too high. And so making the internal temperature switch and stopping running. Please consider ventilation and compulsory heat countermeasures to keep the Motor surface temperature maintained below 90°C.
- The BRAKE/STOP function is electronic brake. While braking after 0.5 seconds, the Motor will have no holding torque. Please use with TROY's Electromagnetic Brake Motor series to brake stop and hold the Motor position for a long time.

✘ Please inquiry with local office or distributor to choose product

4 • Motor Wiring Diagram

➔ Induction Motor Wiring diagram A(6~40W)



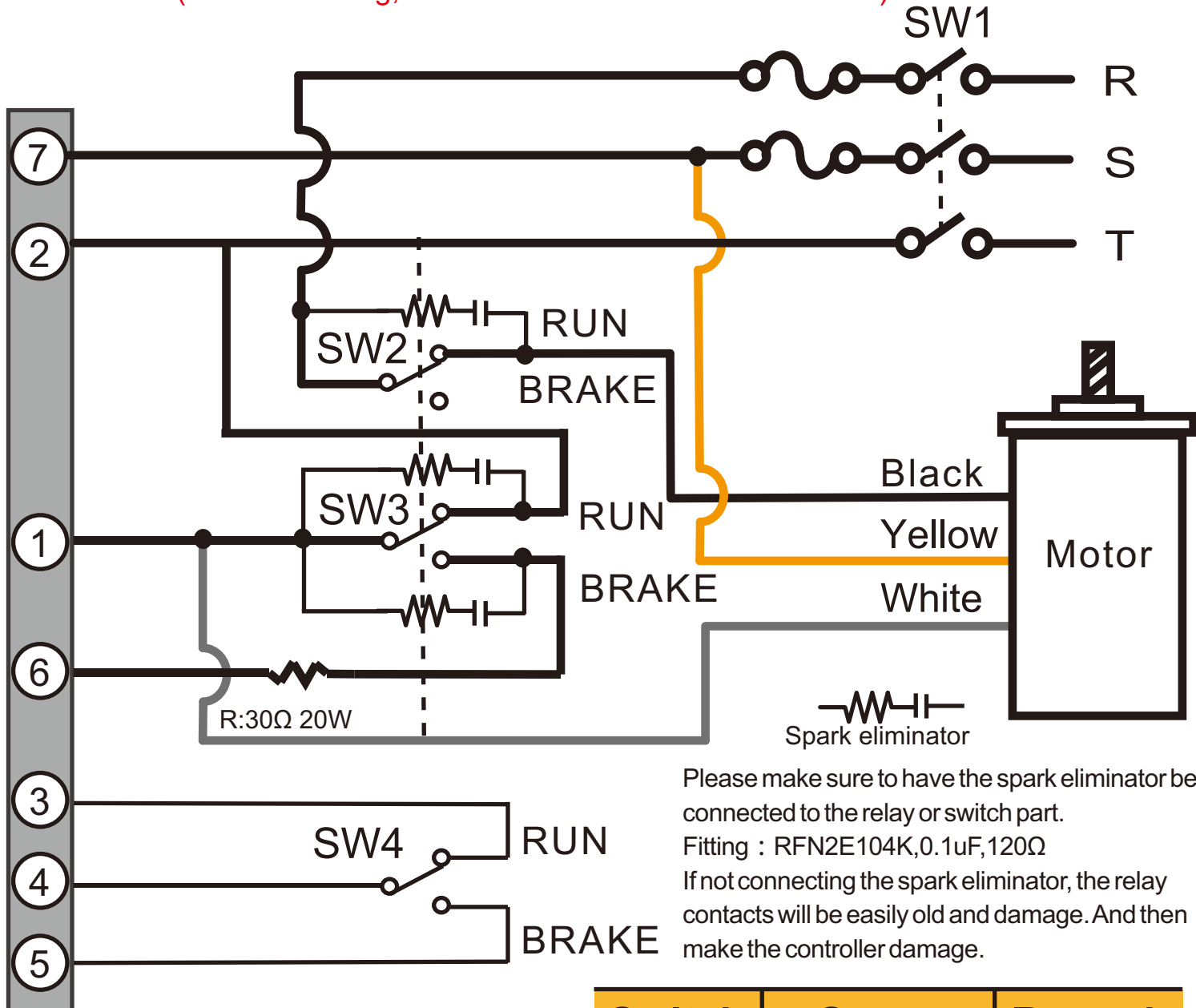

Spark eliminator

Please make sure to have the spark eliminator be connected to the relay or switch part.
Fitting : RFN2E104K, 0.1uF, 120Ω
If not connecting the spark eliminator, the relay contacts will be easily old and damage. And then make the controller damage.

Switch	Specs	Remark
SW1	≥ AC250V 5A	
SW2	≥ AC250V 7A	
SW3	≥ AC250V 5A	Synchronous relay
SW4	DC20V 10mA	
Spark eliminator	0.1uF, 120Ω	Fitting: RFN2E104K

Induction Motor Wiring diagram B(60~90W)

Below is diagram for CW(Clockwise),if changing to CCW(Counterclockwise)please make the power supply R, S swapped
(While switching, make sure there is no brake current)



Please make sure to have the spark eliminator be connected to the relay or switch part.
Fitting : RFN2E104K,0.1uF,120Ω
If not connecting the spark eliminator, the relay contacts will be easily old and damage. And then make the controller damage.

Switch	Specs	Remark
SW1	≥ AC250V 5A	
SW2	≥ AC250V 7A	
SW3	≥ AC250V 5A	Synchronous relay
SW4	DC20V 10mA	
R:Resistor	30Ω 20W Winding resistor	
Spark eliminator	0.1uF,120Ω	Fitting: RFN2E104K



WARNING


※May cause dead or serious injury etc.

Take protective device of over current, instant stop, over temperature, ground fault interrupter.	 Prevent fire, injury, electric shock
Do not use product near explosive, water, corrosive gas, or combustible material.	 It may cause fire
Do not forcibly put stress, or lead a heavy article on or stuff foreign matter into it.	 It may cause electric shock, trouble, and damage
Avoid damage caused by earthquake, fire, artificial accident, please set and fix it for confirmation.	 Prevent electric shock, injury, fire, trouble and damage
Install an external emergency stop circuit to turn the power off in the instant halt of operation.	 Prevent electric shock, injury, fire, trouble and damage
Connect the Brake and Motor to ground.	 Prevent electric shock
Neither reach nor touch the Brake terminals while power is on.	 It may cause electric shock
Execute safety examination after earthquake	 Prevent fire, injury, electric shock
Have a professional expert set the wiring construction accurately.	 Prevent electric shock, injury, fire, and trouble
Do not work for moving, wiring or inspection with the power on	 Prevent electric shock, injury, fire, and trouble
Do not touch the internal parts of the Brake.	 It may cause electric shock , scald
Do not stand/sit on product or put heavy article on it.	 It may cause electric shock, trouble, damage
Ensure that wiring has been correctly done.	 Prevent injury trouble, damage

※Please dealing according to industry littering as discarding the product.

ATTENTION

※May cause injury or product damage.

When conducting trial operation, make Motor fixed. Confirm motion before composing machine system.	 Prevent injury
When temperature of Brake or Motor is rising, please do not touch it.	 It may cause scald.
Do not reform, assemble or repair the Brake.	 It may cause electric shock, injury, fire.
Move the product with a great care so as to prevent from the danger such as tumble or turnover.	 It may cause injury, damage.
When power recovers after interruption, don't approach devices since it may restart operation suddenly.	 It may cause injury.
Please follow the appointed voltage.	 Prevent injury, fire, electric shock
Do not cut-in or off the power frequently.	 It may cause trouble.
Do not use damaged Brake or Motor.	 It may cause injury, fire.
Do not put obstacle around Brake and Motor or it'll be airless.	 It may cause scald, fire.
Please have the cause troubleshooting as tripping, and restart after safety confirming.	 Prevent injury
Have an expert execute maintenance and inspection.	 Prevent injury and electric shock
Neither block nor stuff the aspiration/exhaust vent with foreign particle.	 It may cause electric shock, trouble, fire.
Use Brake and Motor in designed combination.	 Prevent fire
Do not put a heavy impact on shaft of Motor and Brake	 It may cause trouble.
Please turn power off as stop using for a long period.	 It may cause injury from wrong operating.
Mount the product on an incombustible material such as metal.	 Prevent fire
Do not set magnetic contactor in main power during Motor rotating or stopping.	 It may cause trouble
Do not drive Motor axis from external.	 It may cause fire, trouble, electric shock.

TROY 泰映科技股份有限公司

TROY ENTERPRISE CO., LTD

Motor manufacturer

www.troy.com.tw

Made in Taiwan



- ISO 9001 : 2008
- ISO 14001 : 2004



• BAUART
• GEPRÜFT
• TYPE
• APPROVED



※Responsibility of environment protection

We place important on spreading environment protection. Each package can be recycled. Please using litter dealing process and recycling to replace the old product.

--- By your attending, we protect the earth together. ---

※ We won't inform individually if we promote the product characteristics. Please inquiry with each office. Thank you very much.